

USER FLOWS

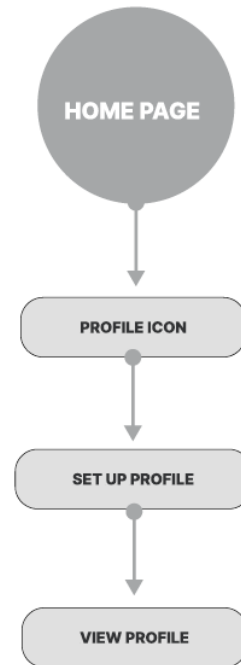
I was tasked to create a feature that would bring more community and the ability to organize content into playlists and so the following flows were important to create.

User Flows:

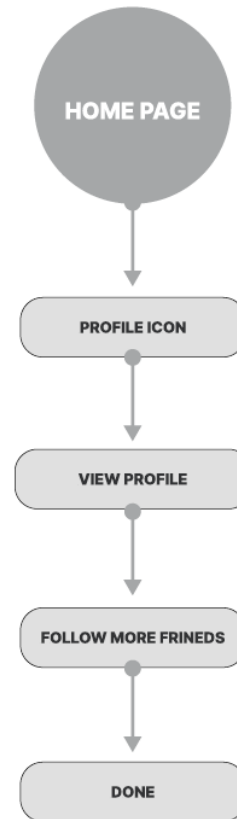
- 1.) Set Up Profile
- 2.) Follow Friends
- 3.) Create Playlists
- 4.) Add to a Playlist

USER FLOWS

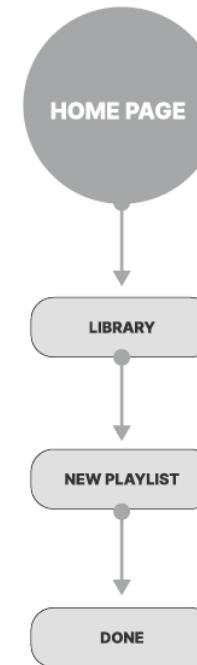
Set Up Profile



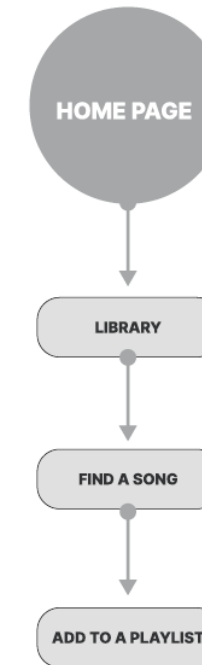
Follow Friends



Create Playlists



Add to a Playlist



TASK FLOWS

TASK FLOWS

PAGE / SCREEN

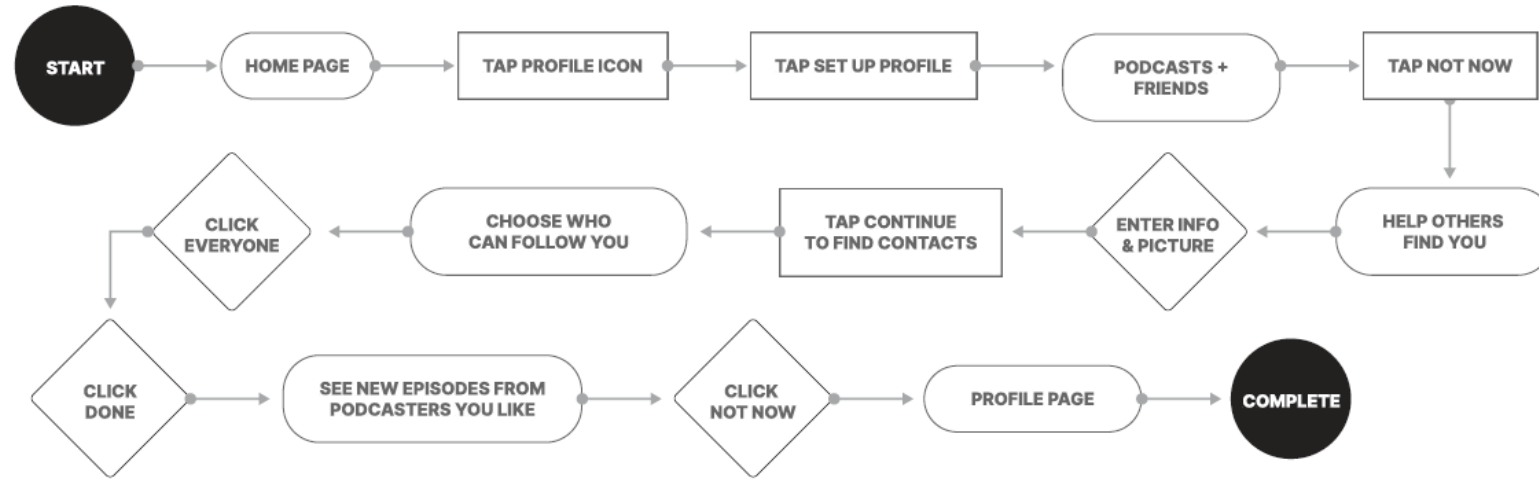
USER DECISION

USER INPUT

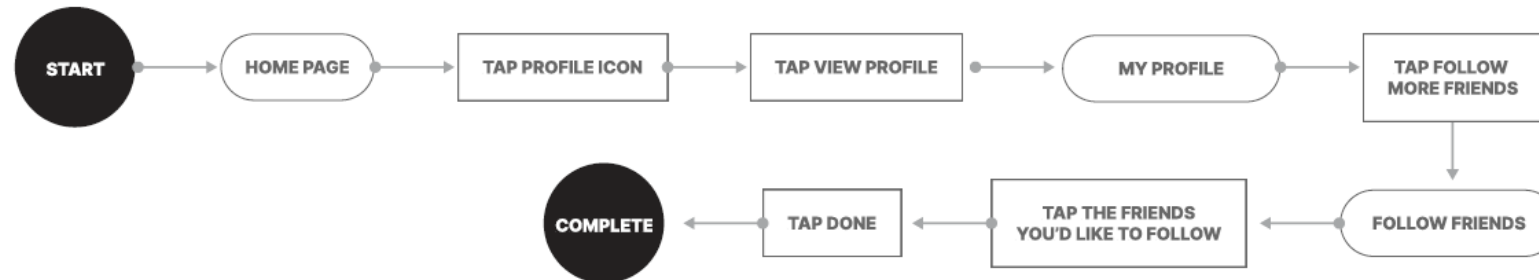
Task Flows:

- 1.) Set Up Profile
- 2.) Follow Friends

Set Up Profile



Follow Friends



TASK FLOWS

TASK FLOWS

PAGE / SCREEN

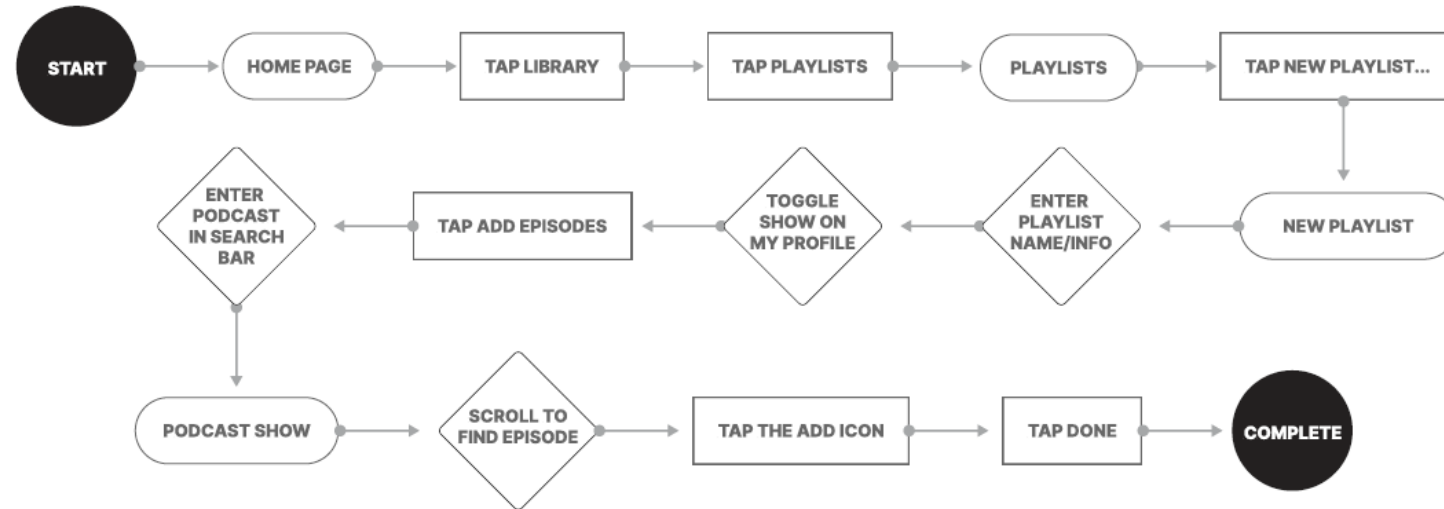
USER DECISION

USER INPUT

Task Flows:

- 1.) Create a Playlist
- 2.) Add to a Playlist

Create a Playlist



Add to a Playlist

