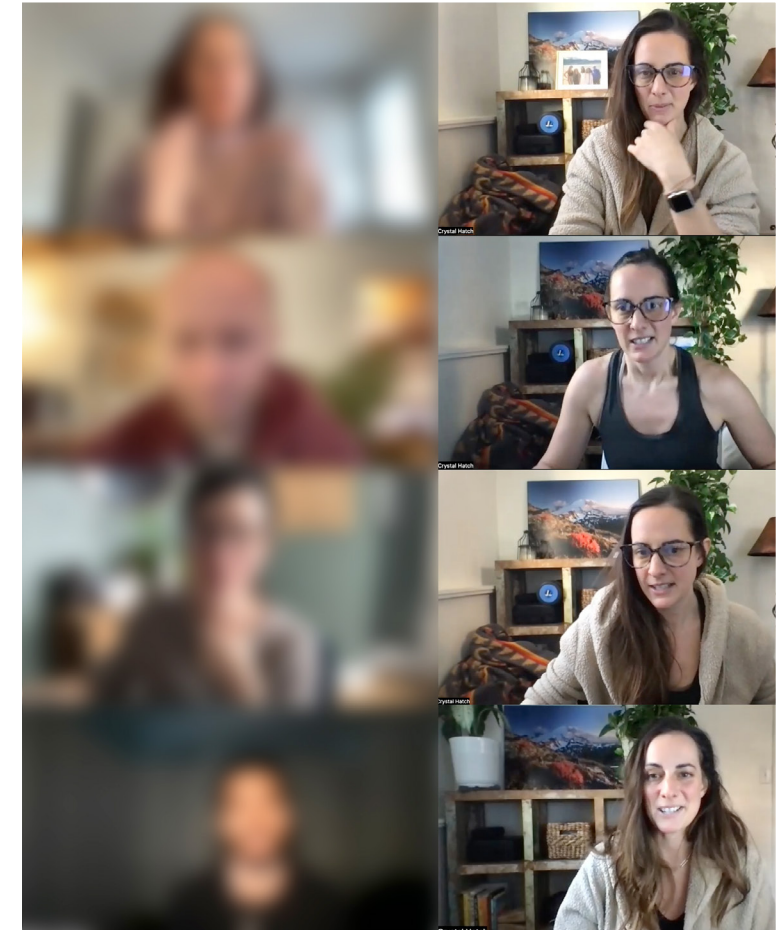
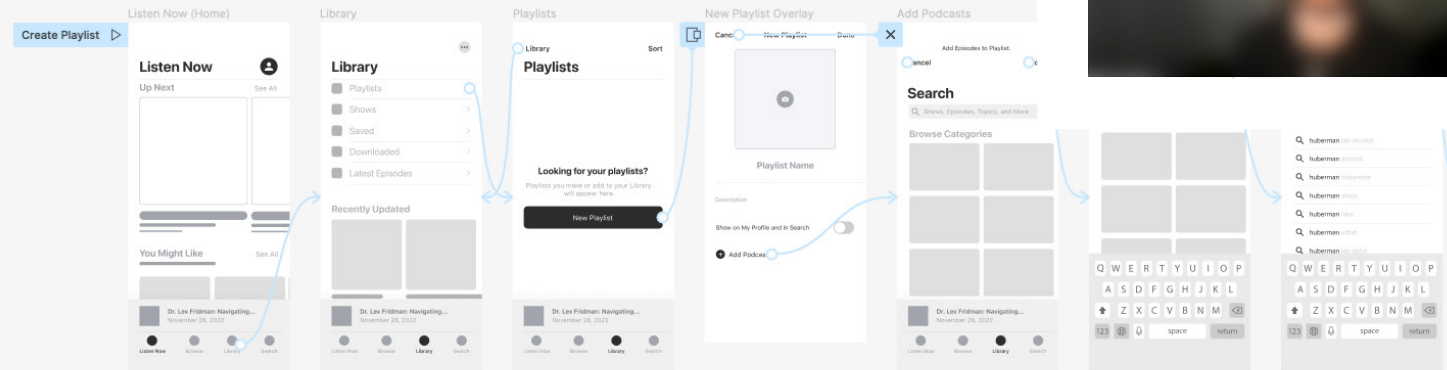
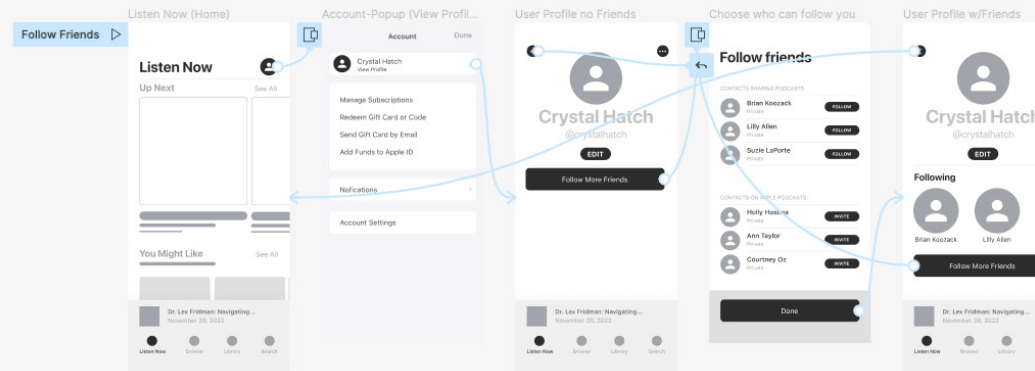
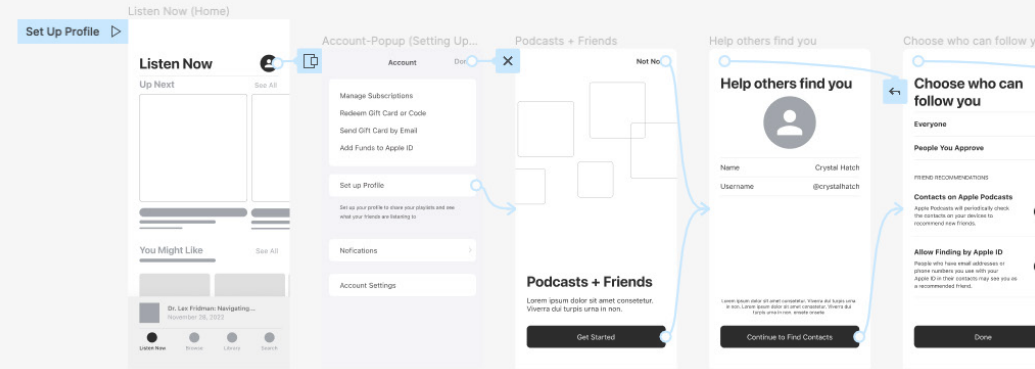


WIREFRAME TESTING

USABILITY TEST

After using the various task flows to conduct a usability test with 4 participants via Zoom, I was able to find potential problem spots for the user.

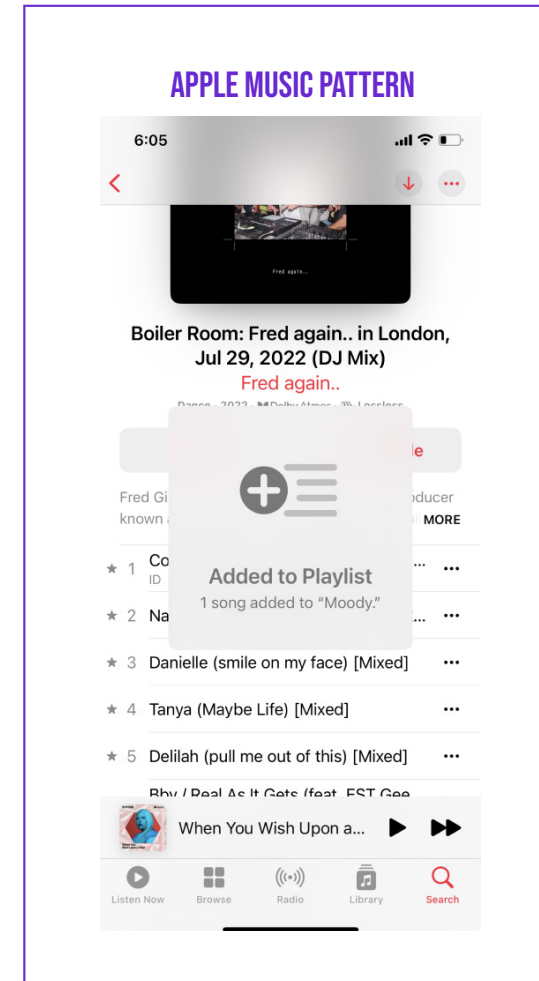
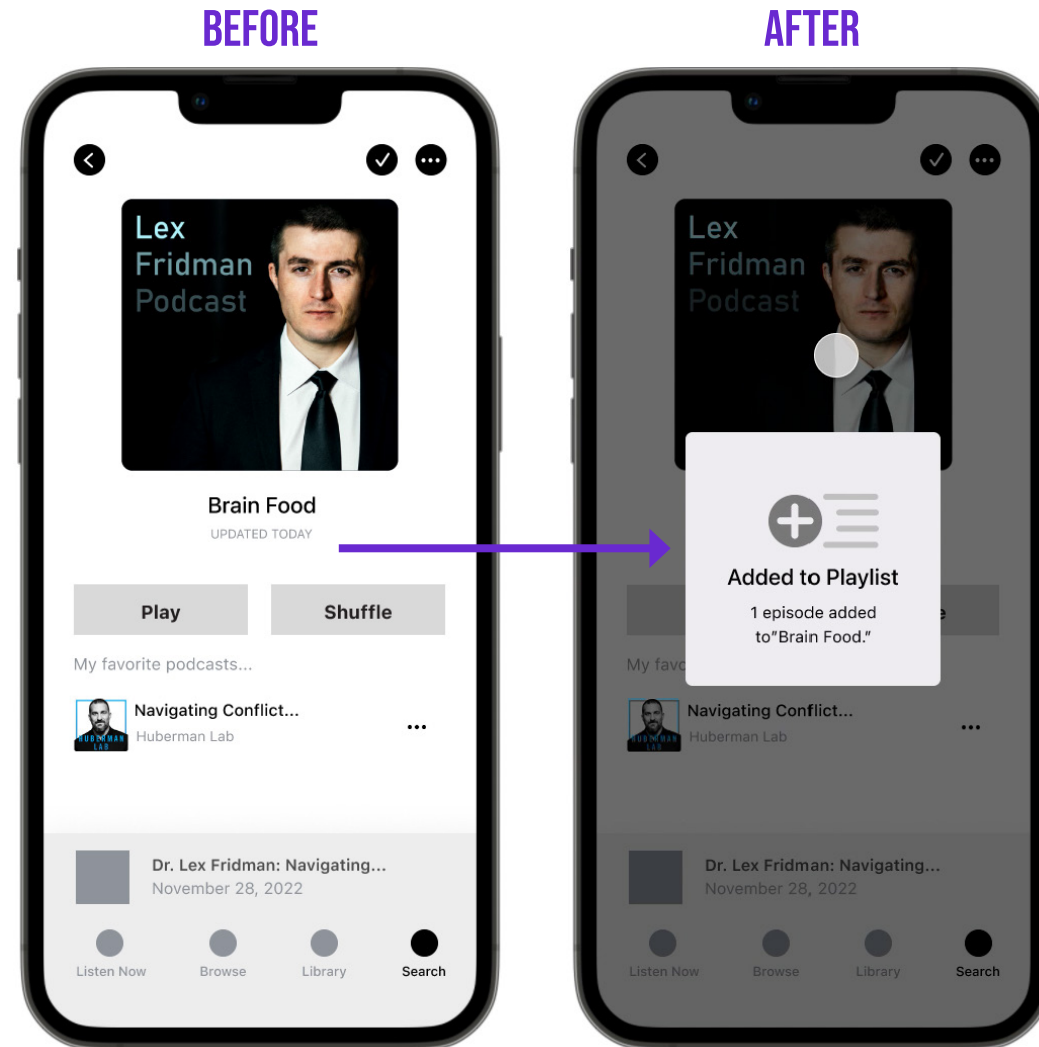


WIREFRAME ITERATIONS

PLAYLIST

When I asked the participants to add an episode to their playlist, they were unsure if it had been added to their playlist because there was no indication after they clicked.

I decided to see how the architecture looks in Apple Music (I'm not currently a user) and I found out that some of the things my users were requesting were already Apple patterns.



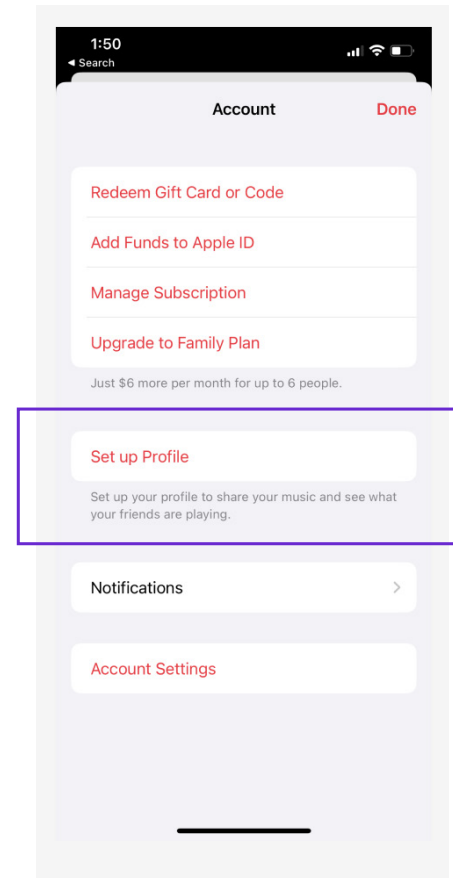
WIREFRAME ITERATIONS

ACCOUNT

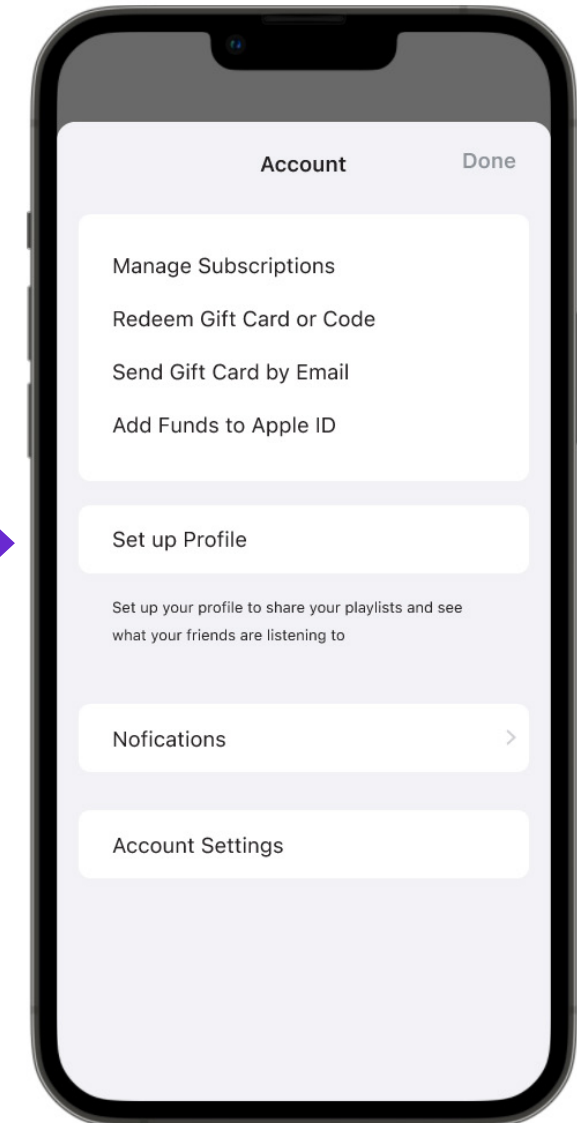
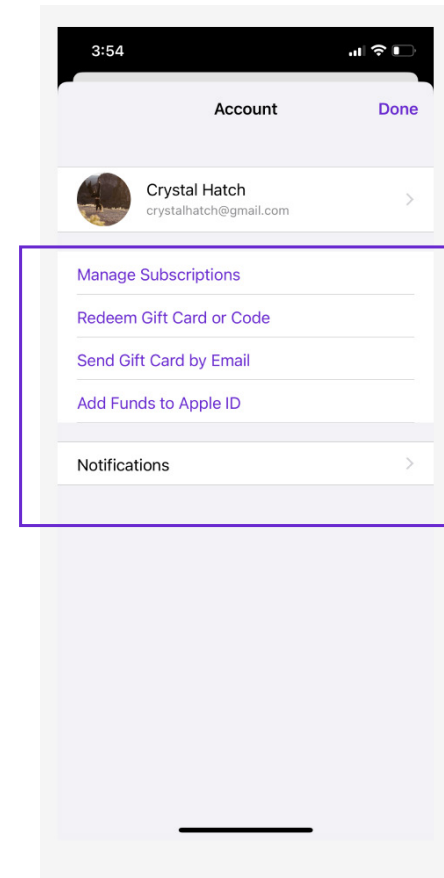
I asked my participants to set up their accounts, and they could easily find where to do that in the header. The problem is that many didn't see "Set up Profile" since it was buried below the top section.

I agreed with them, but I still decided to keep the button in the middle, following Apple Music's pattern for consistency.

APPLE MUSIC



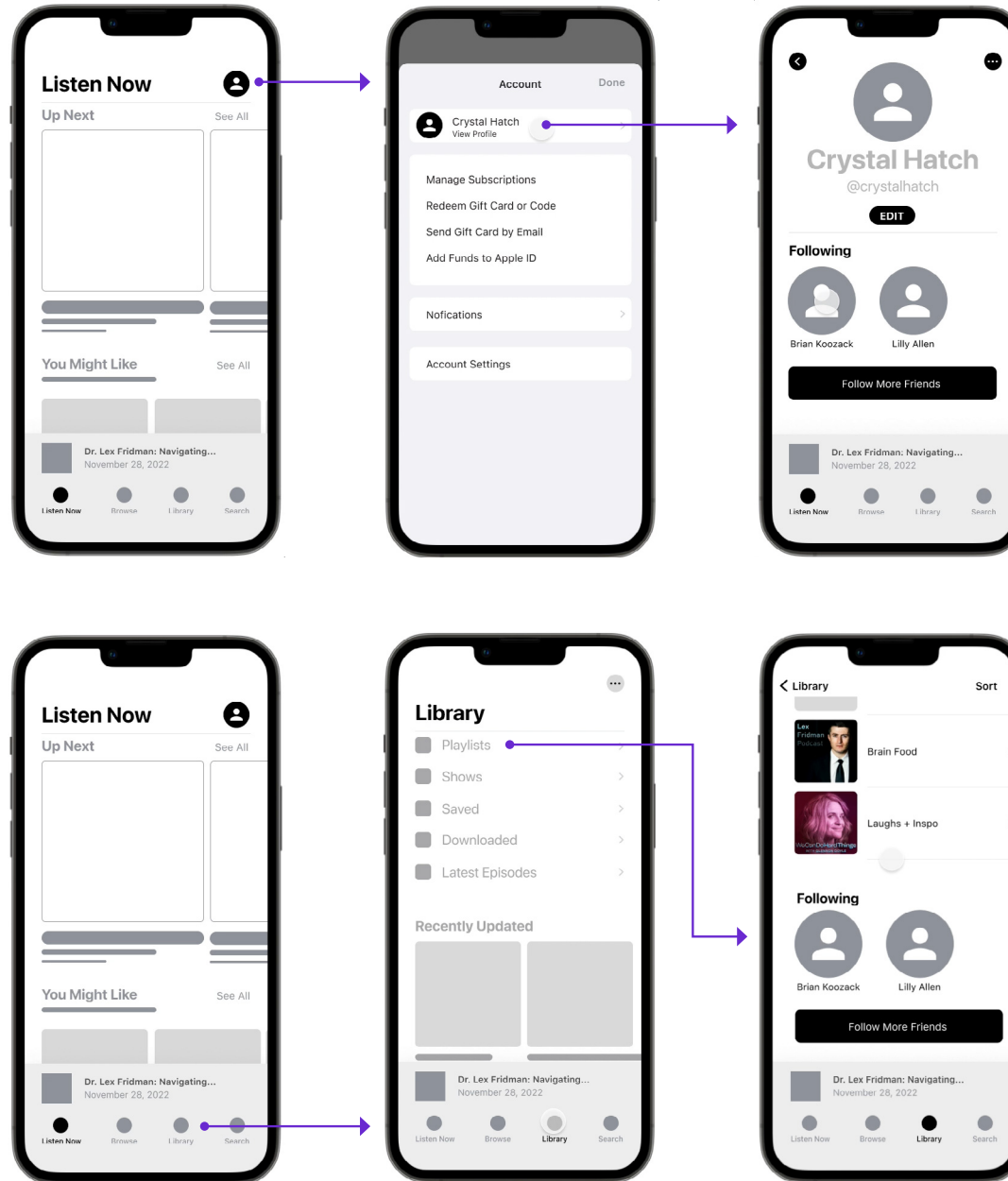
APPLE PODCASTS



WIREFRAME ITERATIONS

FRIENDS

All the participants went to their library and then to their profile when I told them that this is how Apple Music handles this task. I decided I would also add a section under their playlists so they have easy access.



I kept the friends under the user profile

Add here as well:

Because this new feature aims to create access to your friends and what they are listening to, I also wanted to add it to the library section.